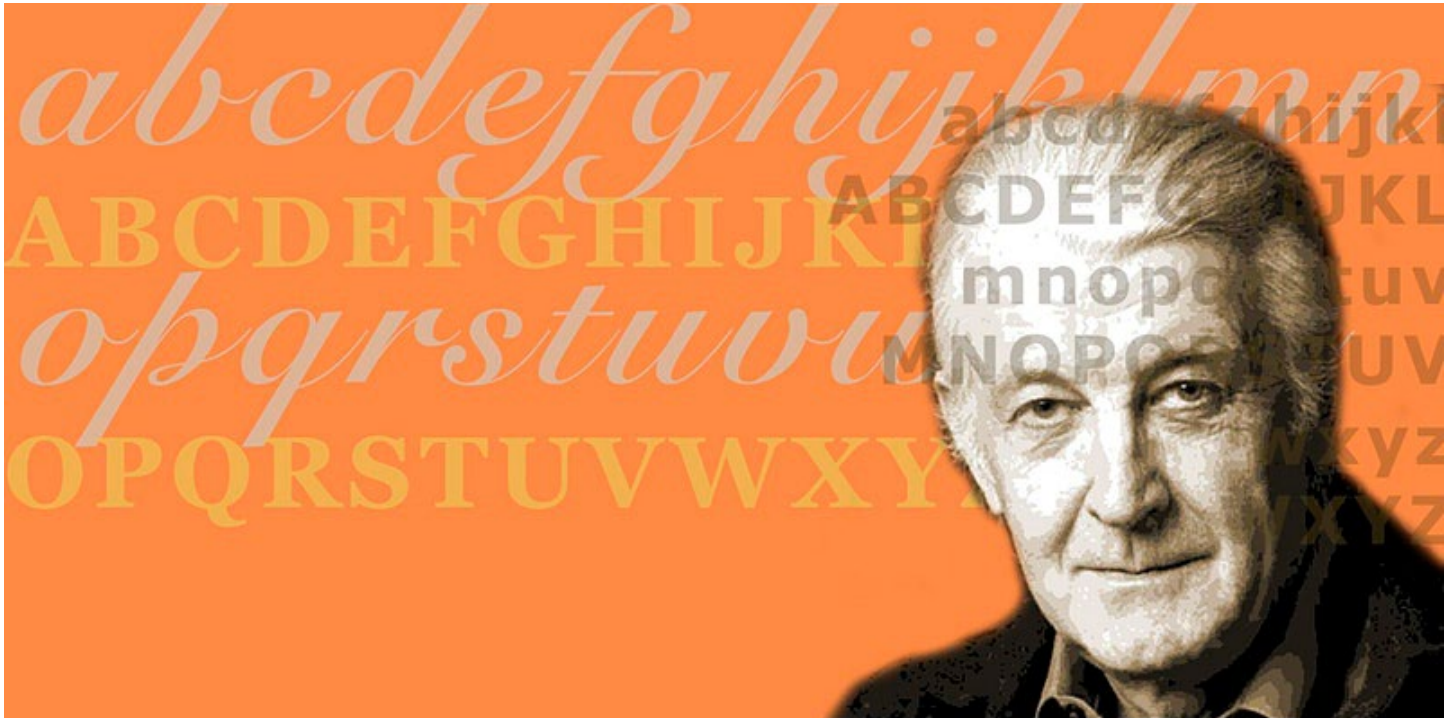




THE NEWBERRY

The Newberry Presents: An Unscripted Look at a Script Type

Matthew Carter and Jill Gage on
the Design of Snell Roundhand



Tuesday
March 2, 2021
4:00–5:00 pm CST

**This virtual
program is free
and open to all.**

**[Please register in
advance here.](#)**

**This program is
sponsored by the
Caxton Club.**

Snell Roundhand is one of the most popular typefaces around, but few are acquainted with its fascinating history. In this program, Snell Roundhand designer Matthew Carter will discuss the origins of this gorgeous typeface in a seventeenth-century script, his work transforming this script into a modern-day font, and the ways type design has changed since the mid-twentieth century.

Snell Roundhand is based on the penmanship of the English writing-master Charles Snell (1667–1733), who advocated a simple style of writing in contrast to his “brother quills,” the competing writing-masters of his day, whose excessively elaborate and flourished hands he deplored.

In this discussion with the Newberry’s Jill Gage, Carter will discuss the exciting evolution of Snell’s seventeenth-century script into a twentieth-century typeface.

For more information and to register, [click here.](#)